

# NO-AUTOTEST EMERGENCY LIGHTING LEDLUX2 CINEMA



Surface Mounted (all "-P" versions)  
Prisadená verzia (všetky "-P" verzie)



Recessed Mounted (all "-V" versions)  
Zapustená montáž do stropu (všetky "-V" verzie)



- Modern design orientated **surface mounted LED** non-maintained/maintained (NM/M) emergency lighting with smooth legend illumination especially designed for cinema / theatre applications.
- **AUTOTEST** function is deactivated to avoid testing (LED ON) during the movie or theatre performance
- Legend luminance  $>200\text{cd/m}^2$  (white), dimmable (see setup on page 175)
- Conforming to the requirement of EN60598-2-22, EN1838, EN62034
- Design: metal sheet body with PE powder coat finish matt RAL9005 (black)
- Elegánntné stropné LED svietidlá pre **netrvalé/trvalé (NM/M)** núdzové osvetlenie s perfektnou rovnomernosťou osvetlenia piktogramu **navrhnuté špeciálne pre použitie v kinách a divadlách**
- **AUTOTEST** funkcia je deaktivovaná, aby sa zamedžilo nežiadúcemu rozsvieteniu LED počas predstavenia
- spĺňa požiadavky európskej normy EN 60598-2-22, EN1838, EN62034
- Jas piktogramu  $>200\text{cd/m}^2$  (white), nastaviteľné (pozri str.175)
- konštrukcia: teleso z oceľového plechu vo farbe RAL9005 (čierna matná)

## STANDARD FEATURES

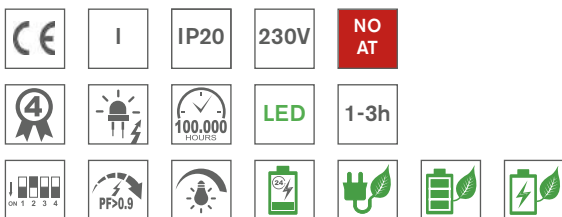
## STANDARDNÁ VÝBAVA

- **High efficient MidPower (150lm/W, 5000K) LONGLIFE LEDs (>100.000h)**
- **NEW Advanced Electronics**
- **LONGLIFE LiFePo4 battery**
- **Installation Mode** (battery protection, for more details look up page No.51+175)
- **Intelligent battery charging** (intermittent charging, look up page No.51+175)
- **DIP Switch** allowing to preset following functions:
  - **ECO Mode** (dimming 10%-100%, for more details look up page No.51+175)
  - LEDs indicating presence of power supply and signaling failures & TEST button
- **vysoce účinné MidPower LED (150lm/W, 5000K) so životnosťou min.100000h**
- **progresívna elektronická jednotka**
- **LONGLIFE LiFePo4 batéria**
- **Inštaláčny mód** (ochrana batérie, pozri aj str.51+175)
- **Inteligentné nabíjanie batérie** ("intermittent" nabíjanie, pozri aj str.51+175)
- **DIP prepínač** umožňujúci prednastavenie funkcií:
  - **ECO Mód** (stmievanie 10%-100%, pozri aj str.51+175)
  - signalizácia LED a TEST tlačítko

## OPTIONAL ACCESSORIES

## PRÍPLATKY

- **Special suspended plexi with layered design for perfect uniform illumination of legend - must be ordered as a separate item (look up also page No.173)**
- Wall or ceiling mounting brackets (look up also page No.174)
- Wire rope suspension set (look up also page No.174)
- **špeciálne vrstvené závesné plexi pre rovnomerné osvetlenie piktogramu na jeho celej ploche (plexi musí byť objednané samostatne podľa želaného piktogramu- pozri aj str.173)**
- nástenná, stropná alebo stropná závesná konzola (pozri aj str.174)
- lanková závesná sada (pozri aj str.174)



### Input Power:

- 5,3W/ 5,6VA (maintained M)
- 2,0W/ 3,8VA (non-maintained NM)
- 3,0W/ 5,1VA (CBS)

Parallel wall mounting bracket  
Konzola rovnobežne so stenou



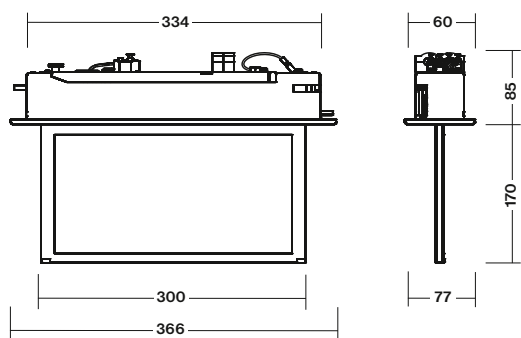
RAL9005

Upright wall mounting bracket  
Konzola kolmo na stenu

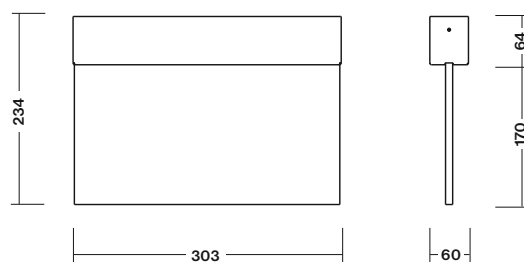


RAL9005

Recessed mounting hole size: 340 x 65 mm  
Rozmer montážneho otvoru : 340 x 65 mm



## NO-AUTOTEST EMERGENCY LIGHTING LEDLUX2 CINEMA



### Surface Mounting **NO-AUTOTEST NM/M**

Type	Version	Colour	Light Source	Duration	Battery	Order Code	Weight
MULTILED2-P.3h <b>NO-AT</b>	Only Body, No Plexi incl.	Black / čierna	MidPower LEDs	3h	LiFePo4 6,4V/1,0Ah	309-B-018-04-00-03	1,2 kg

### Recessed Mounting **NO-AUTOTEST NM/M**

Type	Version	Colour	Light Source	Duration	Battery	Order Code	Weight
MULTILED2-V.3h <b>NO-AT</b>	Only Body, No Plexi incl.	Black / čierna	MidPower LEDs	3h	LiFePo4 6,4V/1,0Ah	309-B-118-04-00-03	1,2 kg

## Suspended Plexi / závesné plexi s piktogramom

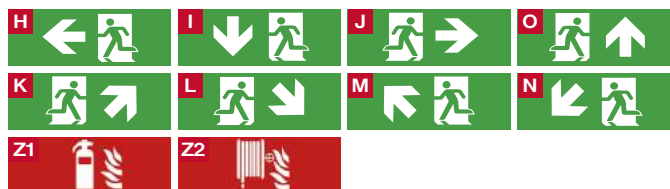


• It is not included in standard package. It must be ordered as separate item !

- Viewing Distance: 30m
- Complying ISO7010
- Legend luminance >500cd/m<sup>2</sup> (white)

• nie je súčasťou štandardného balenia svietidla, musí byť objednané ako samostatná položka !

- rozoznatelnosť piktogramu: 30m
- v súlade s ISO7010
- jas piktogramu >500cd/m<sup>2</sup> (biela)



### Suspended plexi Accessory

Optional Item	Order Code
Double sided plexi with legend H/J	309-B-000-00-00-01
Double sided plexi with legend I	309-B-000-00-00-02
Single sided plexi with legend H	309-B-000-00-00-03
Single sided plexi with legend I	309-B-000-00-00-04
Single sided plexi with legend J	309-B-000-00-00-05
Double sided plexi with legend K/M	309-B-000-00-00-06
Double sided plexi with legend L/N	309-B-000-00-00-07
Single sided plexi with legend K	309-B-000-00-00-08
Single sided plexi with legend L	309-B-000-00-00-09
Single sided plexi with legend M	309-B-000-00-00-10
Single sided plexi with legend N	309-B-000-00-00-11
Single sided plexi with legend O	309-B-000-00-00-12
Double sided plexi with legend O	309-B-000-00-00-13
Double sided plexi with legend Z1	309-B-000-00-00-27
Double sided plexi with legend Z2	309-B-000-00-00-28

### Závesné plexi s piktogramom

Priplatok	Objednávaci kód
Obojstranné plexi s piktogramom H/J	309-B-000-00-00-01
Obojstranné plexi s piktogramom I	309-B-000-00-00-02
Jednostranné plexi s piktogramom H	309-B-000-00-00-03
Jednostranné plexi s piktogramom I	309-B-000-00-00-04
Jednostranné plexi s piktogramom J	309-B-000-00-00-05
Obojstranné plexi s piktogramom K/M	309-B-000-00-00-06
Obojstranné plexi s piktogramom L/N	309-B-000-00-00-07
Jednostranné plexi s piktogramom K	309-B-000-00-00-08
Jednostranné plexi s piktogramom L	309-B-000-00-00-09
Jednostranné plexi s piktogramom M	309-B-000-00-00-10
Jednostranné plexi s piktogramom N	309-B-000-00-00-11
Jednostranné plexi s piktogramom O	309-B-000-00-00-12
Obojstranné plexi s piktogramom O	309-B-000-00-00-13
Obojstranné plexi s piktogramom Z1	309-B-000-00-00-27
Obojstranné plexi s piktogramom Z2	309-B-000-00-00-28

**Optional Accessories:**

- Wall brackets
- Wire rope suspension set

**Priplatky:**

- nástenné konzoly
- lankový záves

Parallel wall mounting bracket  
Konzola rovnobežne so stenou



RAL9005

Upright wall mounting bracket  
Konzola kolmo na stenu



RAL9005

**Optional Item / Priplatky****Order Code**

Parallel wall mounting bracket in black RAL9005 colour / nástenná konzola rovnobežne so stenou v čiernej RAL9005 309-B-000-01-01-03

Upright wall mounting bracket in black RAL9005 colour / konzola kolmo na stenu v čiernej RAL9005 309-B-000-03-01-03

Wire rope suspension set 1,0m long in black RAL9005 colour / lankový závesná sada 1,0m dlhá v čiernej RAL9005 farbe 85-B-05-13-02



# DIP-SWITCH SET-UP FEATURES LEDLUX2 CINEMA



## DIP SWITCH FEATURES No.1 DIP PREPÍNAČ č.1- FUNKCIE

## DIP SWITCH FEATURES No.2-4 DIP PREPÍNAČ č.2-4 - FUNKCIE

**NORMAL MODE 230V MAINS**

**EMERGENCY MODE BATTERY**

**ESCAPE SIGN Brightness in 230V**

ON OFF 1 2 3 4  
OFF = 100%  
BRIGHTNESS > 200cd/m<sup>2</sup>

**ECO MODE 10% (in 230V Mode)**

ON OFF 1 2 3 4  
ON = 10%  
BRIGHTNESS > 2cd/m<sup>2</sup>

**INSTALLATION MODE SET UP**

ON OFF 1 2 3 4

**NON-MAINTAINED / MAINTAINED MODE SET UP**

M / NM

ON OFF 1 2 3 4

**DEFAULT SETTING / PREDNASTAVENÉ**

OFF - ACTIVATED  
ON - DEACTIVATED

**DEFAULT SETTING / PREDNASTAVENÉ**

ON - MAINTAINED  
OFF - NON-MAINTAINED

**TO SEE THE CHANGE PUSH EITHER TEST BUTTON OR DISCONNECT THE FIXTURE FROM BOTH THE MAINS 230V AND BATTERY**  
Po prestavení stlačte TEST alebo odpojte batériu a 230V napájanie na aktiváciu zmeny

